

# FMR Series

Manual Valve  
Direct mounting type

$\frac{3}{4}$  position manual valve

**FMR2402 (Lock)**

4-port, 2-position (with lock)

**FMR3402 (Lock)**

4-port, 3-position,  
closed center (with lock)



- Rotational direction can be reversed with ease; position pinpointed with precision; excellent handling.
- Large effective area.
- Lock-shape enhance safety by eliminating accidental collision-caused danger.

## Specifications

Model No.	Unit	FMR24/34		
Port size		RC $\frac{1}{4}$	RC $\frac{3}{8}$	Rc $\frac{1}{2}$
Effective area	mm <sup>2</sup>	17	20	23
Effective fluid		Air		
Operating ambient temperature	°C	-5~60		
Pressure range	MPa	0~1		
Weight	g	420		



- When the temperature falls below 5 °C, please provide air dryer to prevent water frozen.

## Representation

**FMR24 - 02 - LOCK**

FMR24: 2-position

FMR34: 3-position

FME24: 3-position, ABR connect

① Bore

02: Rc $\frac{1}{4}$

03: Rc $\frac{3}{8}$

04: Rc $\frac{1}{2}$

② Locking device

No label : Standard

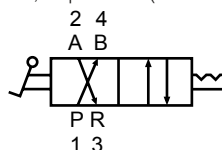
Lock : With locking device



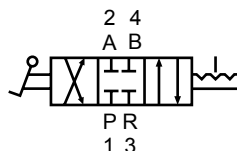
- Please contact Fontal for special request like bottom piping or P and R positions switched type.

## JIS Label

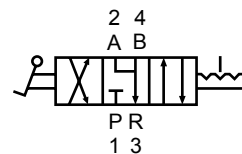
4-port, 2-position (with lock)



4-port, 3-position,  
closed center (with lock)



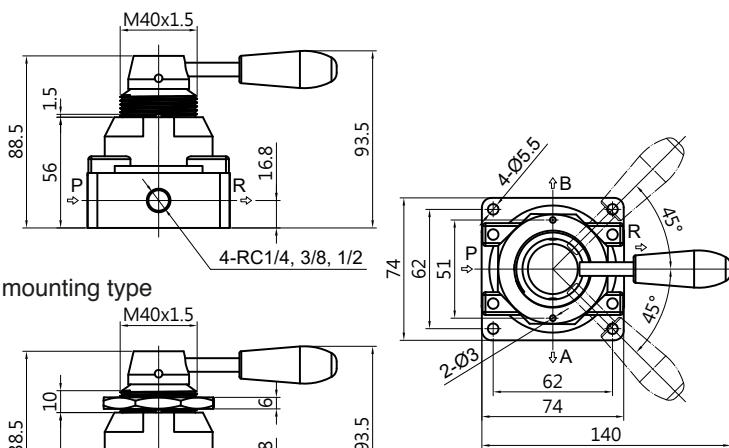
4-port, 3-position,  
ABR connect (with lock)



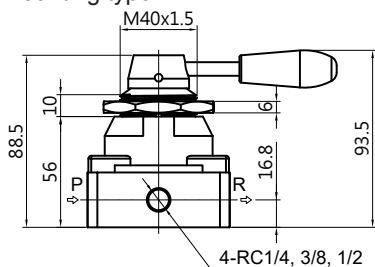
FMR24/34

(Unit: mm)

Valve mounting type



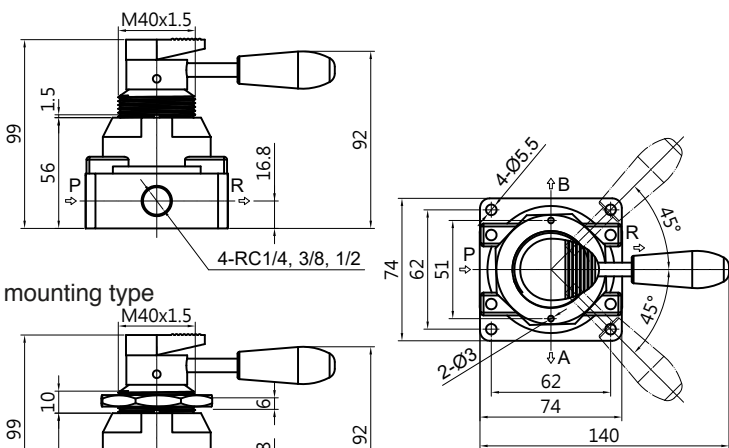
Panel mounting type



FMR24/34 - LOCK

(Unit: mm)

Valve mounting type



Panel mounting type

