

VM15 Series

5 Port Air Operated Valve
Metal Seal/Sub-base Mounting Type

VMS2415

2-position, single sided

VMD2415

2-position, double sided

VMD3415

3-position, closed center

VME3415

3-position, ABR connect



Specifications

Model No.	Unit	VMS2415	VMD2415	VMD3415	VME3415
Fluid		Non-lubricated/lubricated air			
Port size		Rc½, ¾			
Sonic-speed transmission㊦	dm³/(s·bar)	15.00		15.00	
Critical pressure ratio㊦		0.22		0.21	
Effective area㊦	mm²	75		75	
Operating ambient temperature	℃	-5~70㊦			
Operating pressure range	MPa	-0.1~1			
Pilot pressure	MPa	0.2~0.8㊦			
Mass	kg	2.23	2.25	2.55	2.55



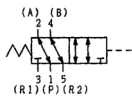
1. When the temperature falls below 5 °C, please provide air dryer to prevent water frozen.
2. Pilot pressure must remain greater than the working pressure. (Pilot pressure ≥ Working pressure).
3. The value shown in sonic-speed transmission, critical pressure ratio, effective area, Cv value represent the value of Port 1 -> 4.

Representation

VMS2415 - 04

Model No.

VMS2415



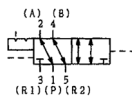
Port size

NB: Without sub-base

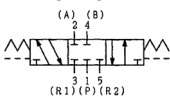
04: Rc½

06: Rc¾

VMD2415



VMD3415



VME3415

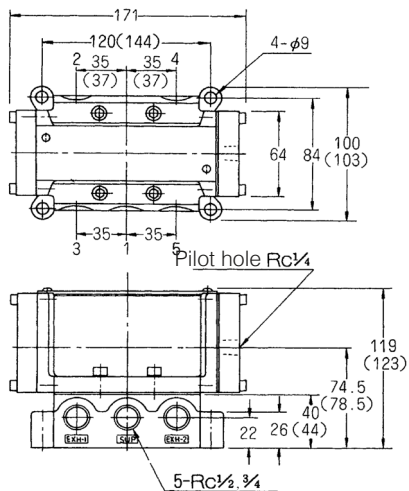


Backup

Sub-base, sub-base gasket, spring are the same as those of PM15 Series.

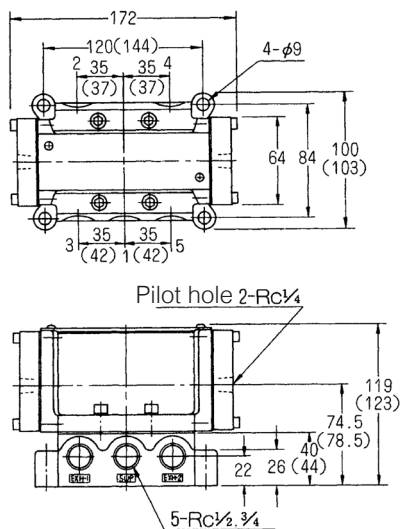
VMS2415

(Unit: mm)



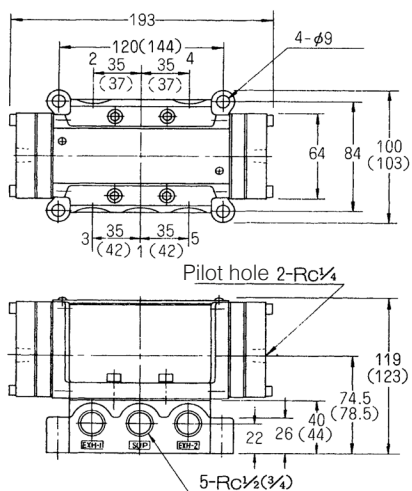
VMD2415

(Unit: mm)



VMD3415, VME3415

(Unit: mm)



Note : The value within bracket are those of Port Rc 3/4