

VM06 Series

5 Port Air Operated Valve
Metal Seal/Sub-base Mounting Type

VMS2406

2-position, single sided

VMD2406

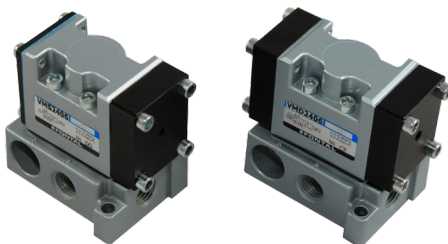
2-position, single sided

VMD3406

3-position, closed center

VME3406

3-position, ABR connect



Specifications

Model No.	Unit	VMS2406	VMD2406	VMD3406	VME3406
Fluid		Non-lubricated/lubricated air			
Port size		Rc¼			
Sonic-speed transmission㉑	dm³/(s·bar)	2.50		2.40	
Critical pressure ratio㉒		0.2		0.18	
Effective area㉓	mm²	12.5		12	
Operating ambient temperature	℃	-5~70㉔			
Operating pressure range	MPa	-0.1~1			
Pilot pressure	MPa	0.2~0.8㉕			
Mass	kg	0.34	0.38	0.38	0.38



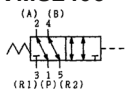
- When the temperature falls below 5 °C, please provide air dryer to prevent water frozen.
- Pilot pressure must remain greater than the working pressure. (Pilot pressure ≥ Working pressure).
- The value shown in sonic-speed transmission, critical pressure ratio, effective area, Cv value represent the value of Port 1 -> 4.

Representation

VMS2406 - **02**

Model No.

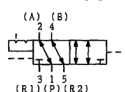
VMS2406



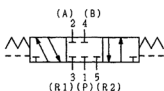
Port size

NB: Without sub-base
02: Rc1/4

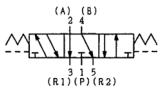
VMD2406



VMD3406



VME3406

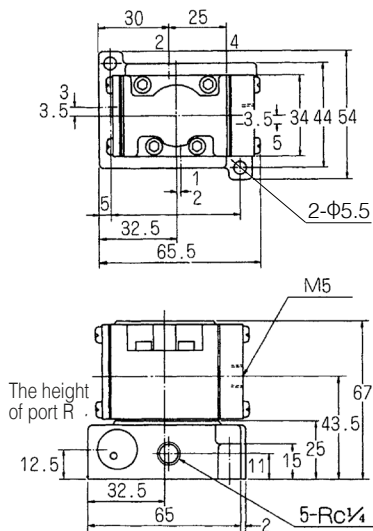


Backup

Sub-base, sub-base gasket, spring are the same as those of PM06 Series.

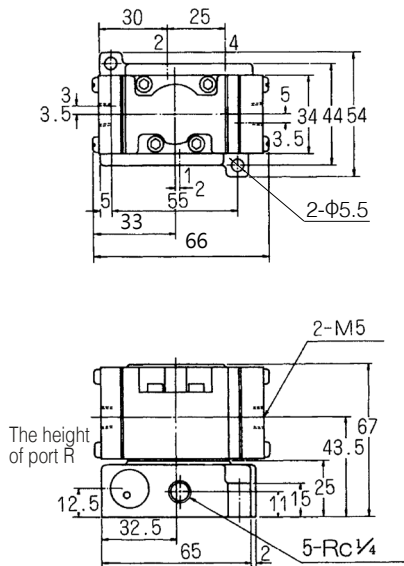
VMS2406

(Unit: mm)



VMD2406

(Unit: mm)



VMD3406, VME3406

(Unit: mm)

